

ESRA[®] III Eyebrow Upgrade
Expressive System for Robotic Animation

ESRA III Eyebrow Kit Contents



Assembly Instructions

Some Basic tool and supplies are required for assembly, including:

- Phillips Screwdriver
- Regular Screwdriver

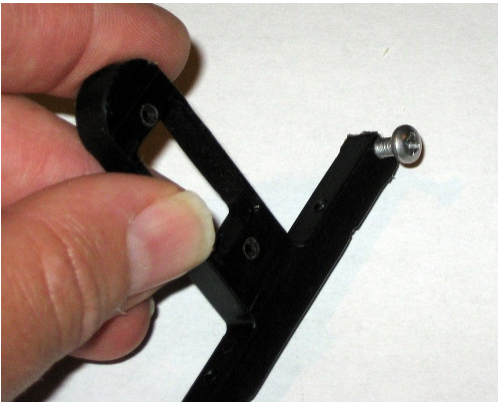


Figure 1

Locate the # 6 self tapping screw. Screw in and then unscrew it into each of the large holes on either end of the eyebrow support. This is to cut threads into the plastic frame.

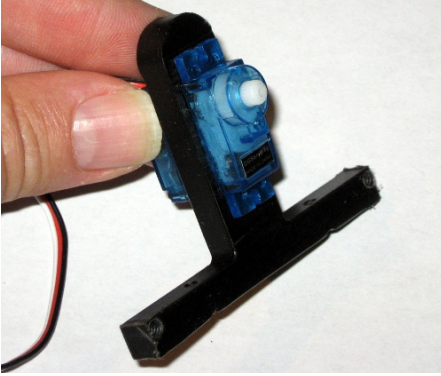


Figure 2

Inset a servo into the cutout on the eyebrow support. Attach with the two screws that came with the Servo.

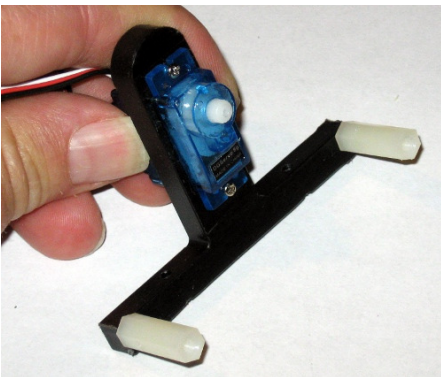


Figure 3

Screw in the $\frac{3}{4}$ inch nylon standoffs

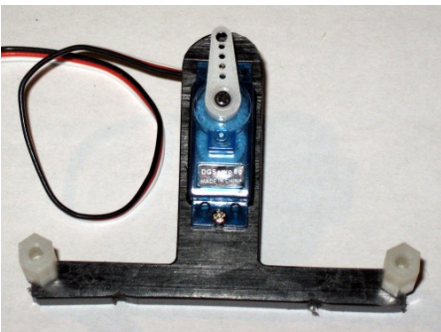


Figure 4

Locate the servo arm and attach it to the servo with the included small screw. Generally servos are shipped already centered so attach the horn with it pointing up as shown. If it needs to be adjusted that can be achieved after final assembly.



Figure 5

Attach the brows by inserting a #4 self tapping screw through the overlapping offsets (see next picture) and screwing the screw into the smaller hole of the connecting shaft.

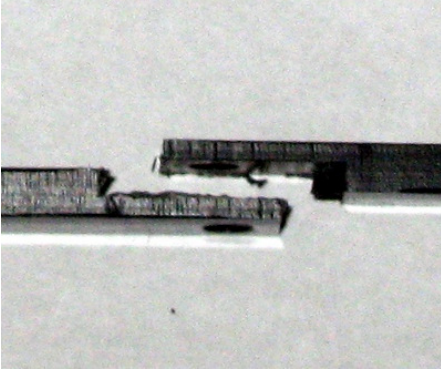


Figure 6

Close up of the overlapping offsets as they are placed prior to inserting the #4 screw.

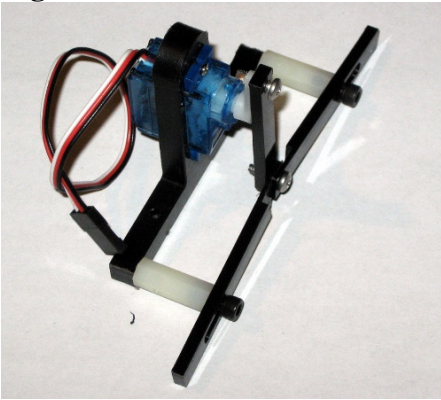


Figure 7

Finger tighten the #6 socket head cap screws through the slots in the brows. Insert a #4 screw through the connector shaft and screw it into the servo horn.

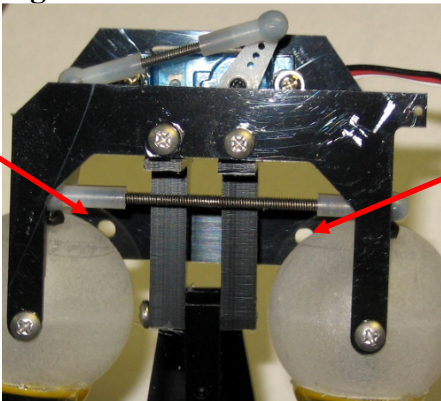


Figure 8

Locate the two holes in the top of your ESRA III eyeframe. Two #4 screws are inserted through the holes and into the bottom of the eyebrow support.

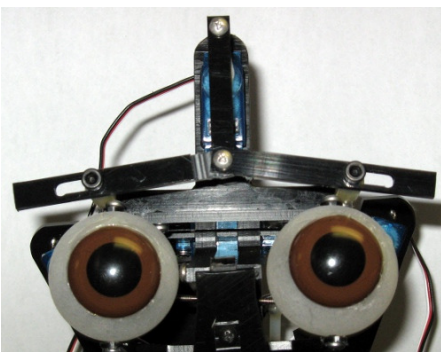


Figure 9

When completed is should appear something like this.