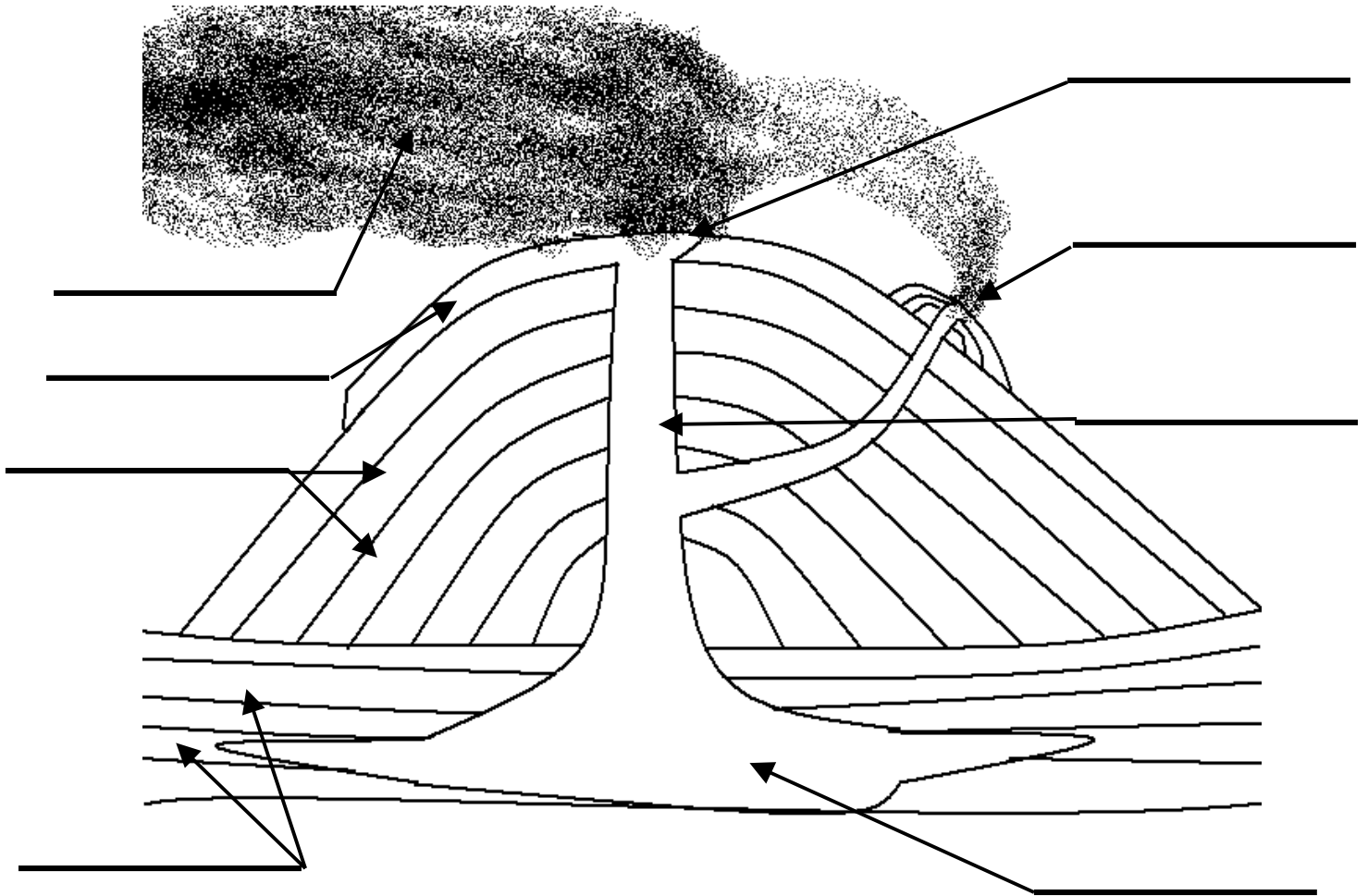


Name: _____

Label the Volcano Diagram



Ash cloud - an ash cloud is the cloud of ash that forms in the air after some volcanic eruptions.

Conduit - a conduit is a passage through which magma (molten rock) flows in a volcano.

Crust - the crust is Earth's outermost, rocky layer. This diagram is sedimentary

Lava Flow - lava is molten rock; it usually comes out of erupting volcanoes.

Magma chamber - a magma chamber contains magma (molten rock) deep within the Earth's crust.

Side vent - a side vent is a vent in the side of a volcano.

Vent - a vent is an opening in the Earth's surface through which volcanic materials erupt.

Lava and pyroclastic layers fragments that are ejected from the volcano as solid fragments, layered with lava.